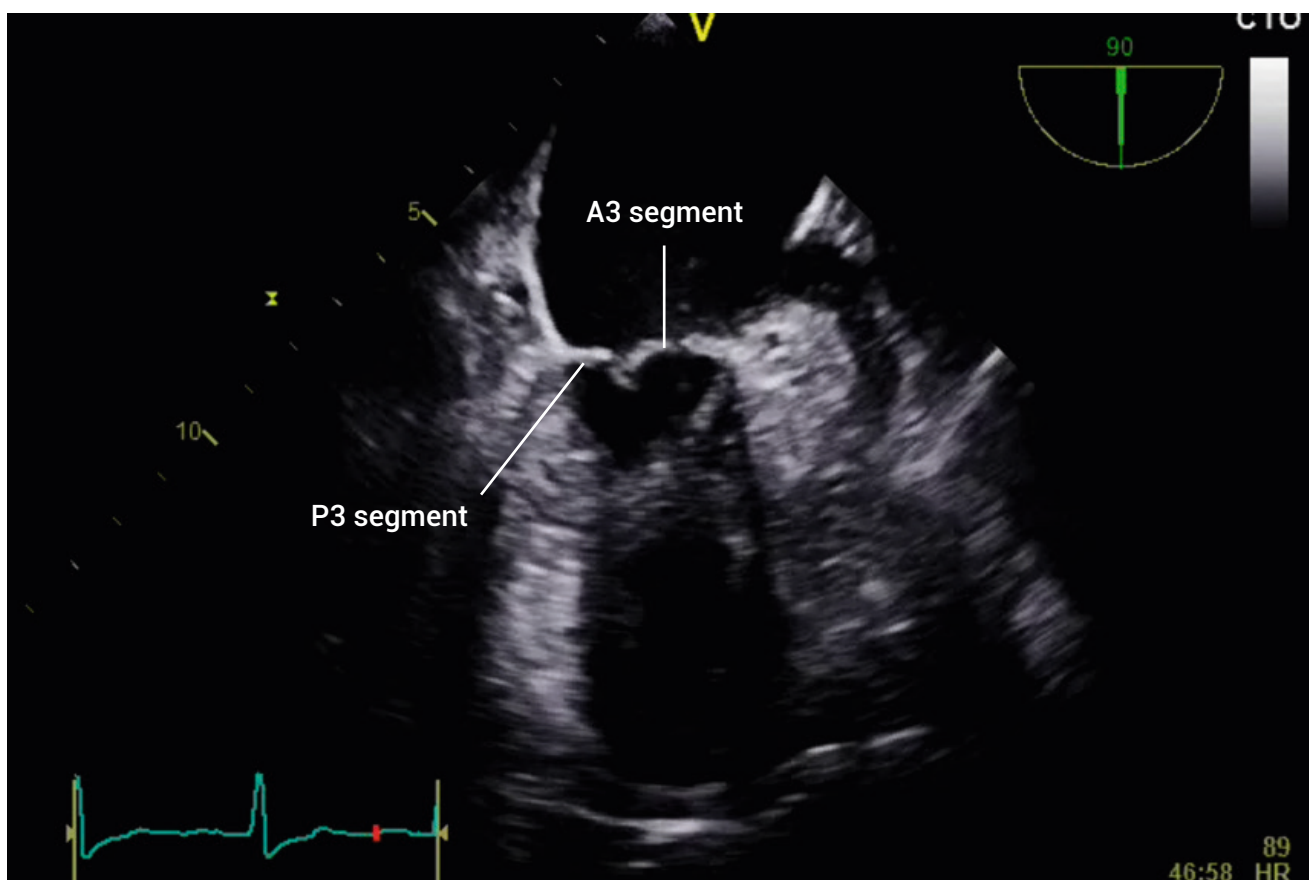


TEE ESSENTIALS

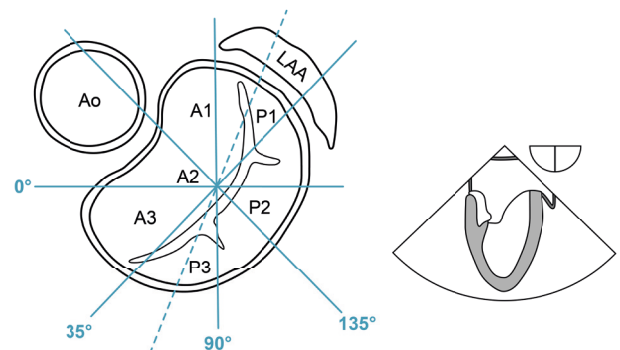
Assessment of the mitral valve: Mid-esophageal posteromedial commissure view

The mid-esophageal posteromedial commissure view is not included in the American Society of Echocardiography's list of standard TEE views, but it is included in the British Society of Echocardiography's minimum TEE dataset.

This TEE view is essentially a variant of the two-chamber view and, like that view, is obtained at the mid-esophageal level using a transducer angle of 80–100°. However, for this view, the probe is turned towards the patient's right, to bring the posteromedial commissure into view.



Start with the mid-esophageal two-chamber view, and then turn the probe to the patient's right. This will sweep the imaging plane across the mitral valve and will bring the posteromedial commissure, and therefore the A3/P3 segments, into view. Use color Doppler as appropriate to assess mitral valve function.



Further reading

Wheeler R, Steeds RP, Rana B, et al. 2015. A minimum dataset for a standard transoesophageal echocardiogram: a guideline protocol from the British Society of Echocardiography. *Echo Res Practise*. 2: G29–G45.